

INTER LINKED

Environmental Connection: Final Crit

THE BRIEF:

Design An Urban Intervention In **The Fields That:**

- Appeals To Teens 15-17
- Connects Teens To Nature
- Improves The Well-being Of Teens
- Develops A Better Appreciation Of Nature

TARGET AUDIENCE

WHO IS OUR USER?



Bourne Academy Students: 'Liam'

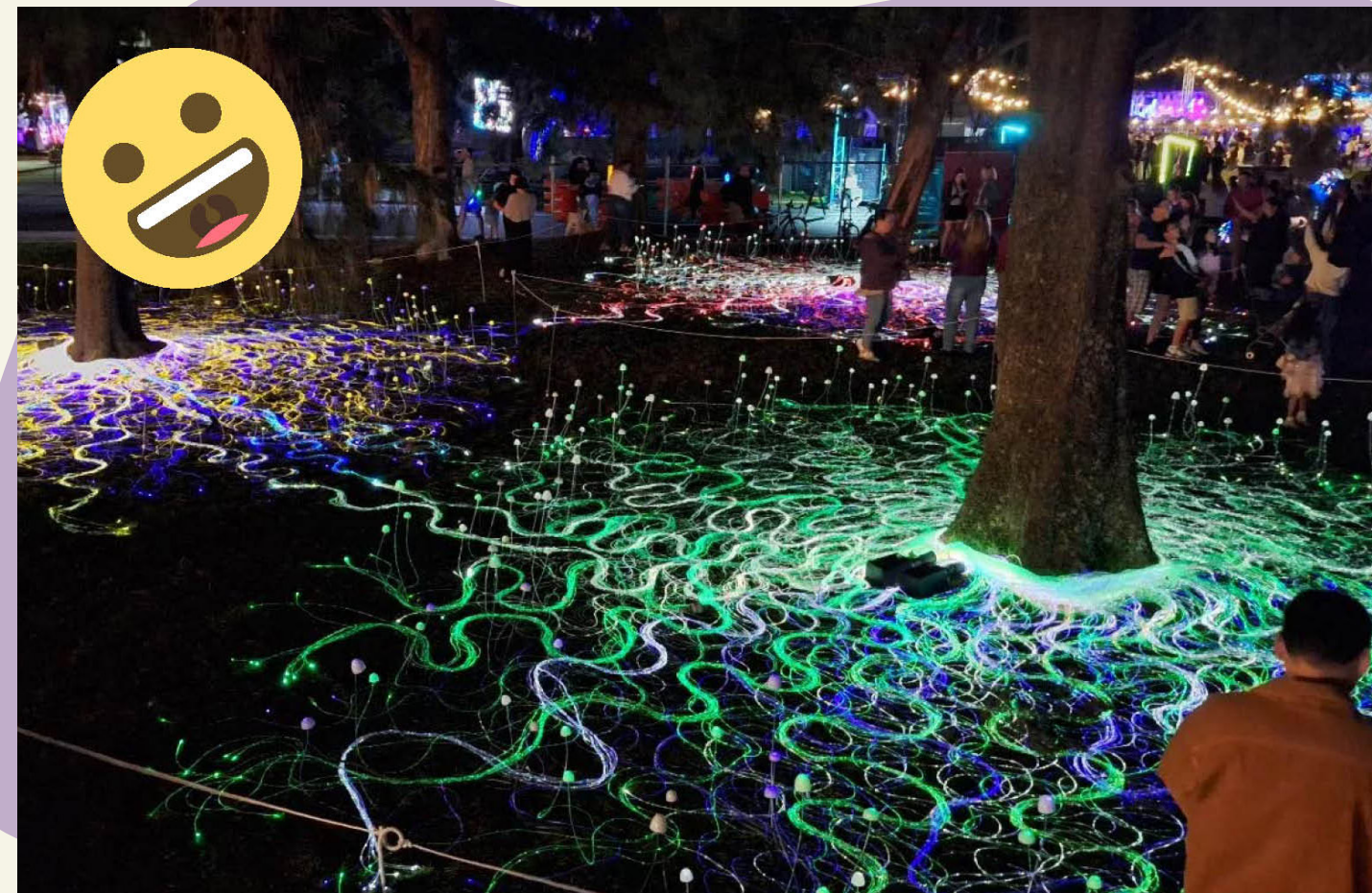
'Liam' is an outdoors-focused, hands-on learner who thrives on exploration, movement, and real-world connection. He dislikes dense urban settings and prefers engaging, interactive environments that let him discover, hike, and socialise in natural spaces.

USER INSIGHTS



INTERACTIVE / LIGHT ART

RANK 🥰 😊 😌 😞 😡



NIGHT-ACTIVATION / MYCILIUM NETWORK

RANK 🥰 😊 😌 😞 😡



INTERACTIVE / PROJECTION

RANK 🥰 😊 😌 😞 😡

'Liam' is drawn to interventions that use light mixed with physical activities and responsive tech to create immersive, sensory-rich environments. His favourites transform natural spaces into playful, interactive experiences that feel alive.



USER FEEDBACK

1.

Helps teens understand the genius of nature

2.

Doesn't stand out to the modern "gaming teen" generation

3.

Not much to do after doing it once, could run out of visitors

Visitors shift from an anthropocentric view to seeing themselves as part of the ecological system, witnessing how their actions ripple through a living network.

“The mycelium connects all living plants — like a natural internet, it has the power to heal, sustain, and remind us we’re all connected.”

— Paul Stamets, “Fantastic Fungi” (2019)

BIO-MIMICRY

Michael Pawlyn



Bio-rock Pavilion



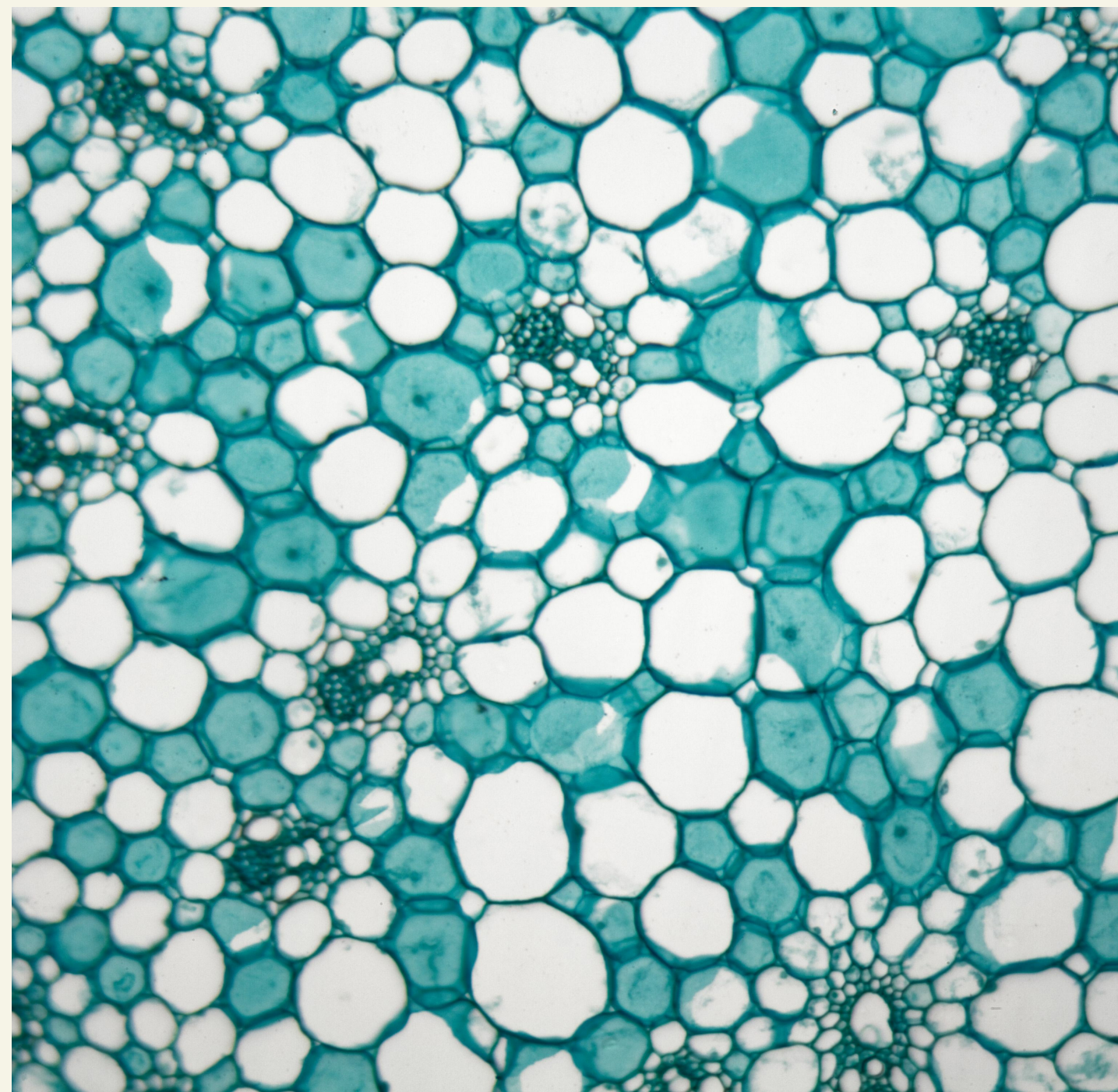
Biomimetic Office Building



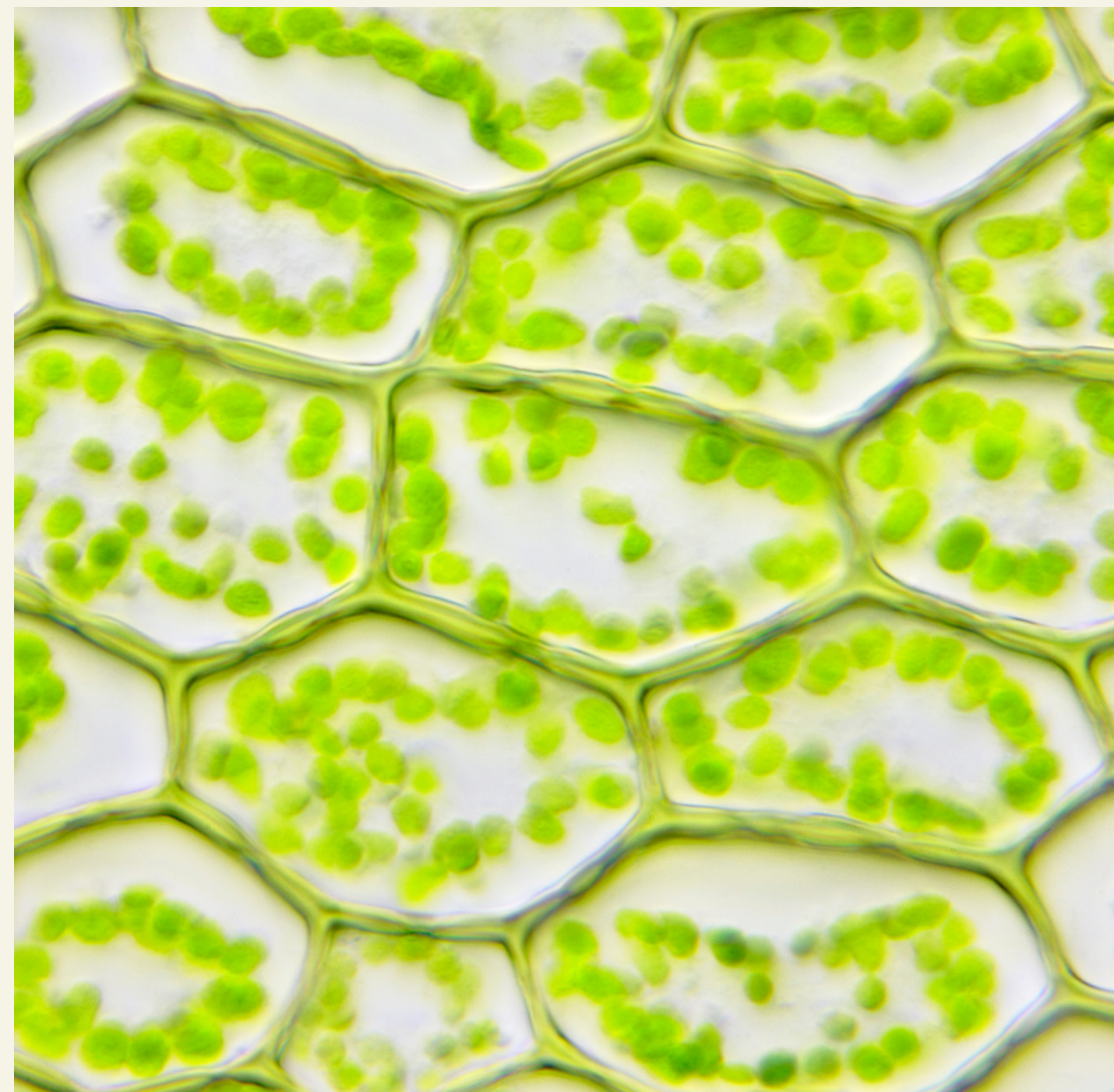
Crow-Skull Pavilion

VISUAL LINKS

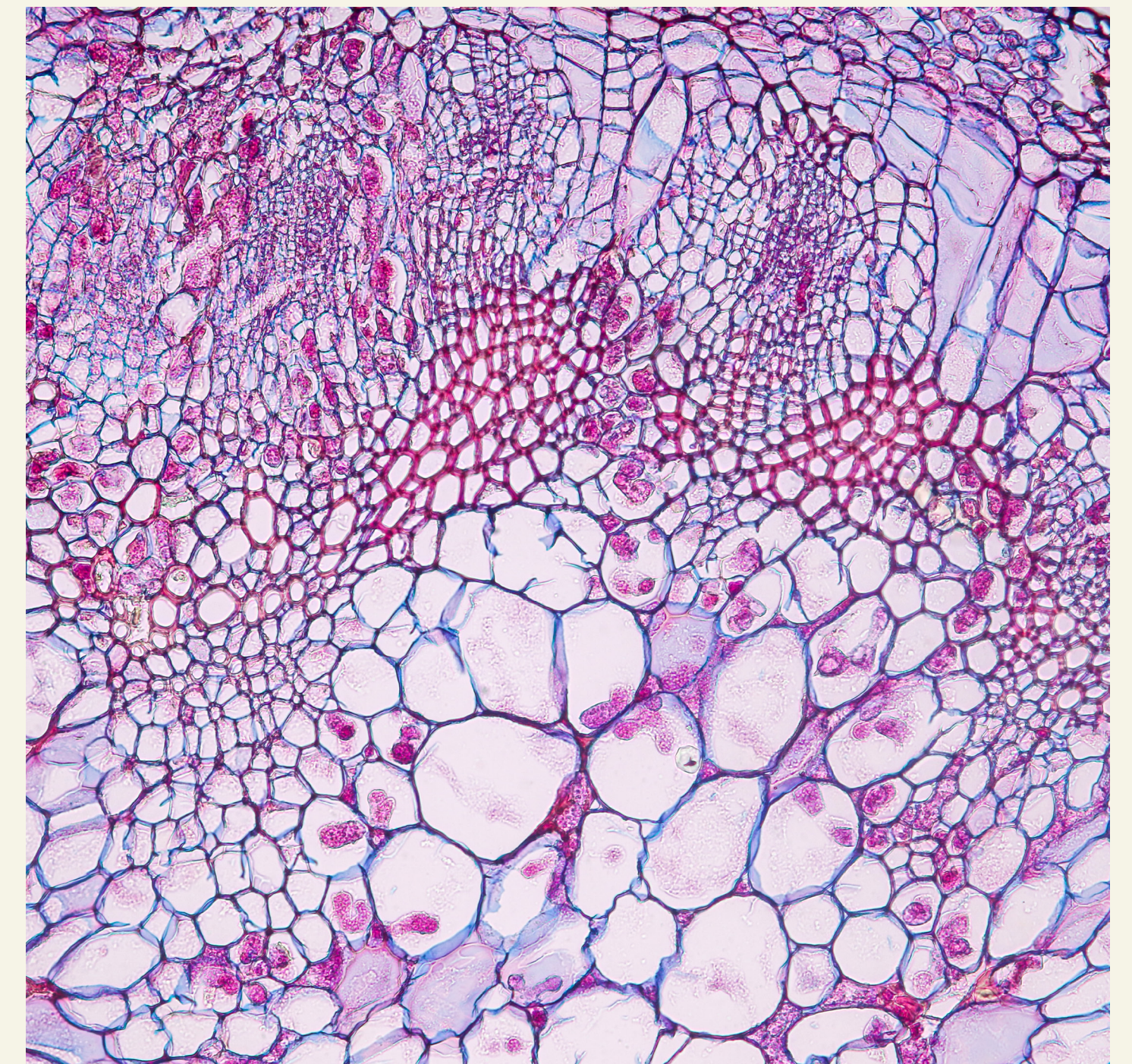
Plants At A Microscopic Level



Maize Plant



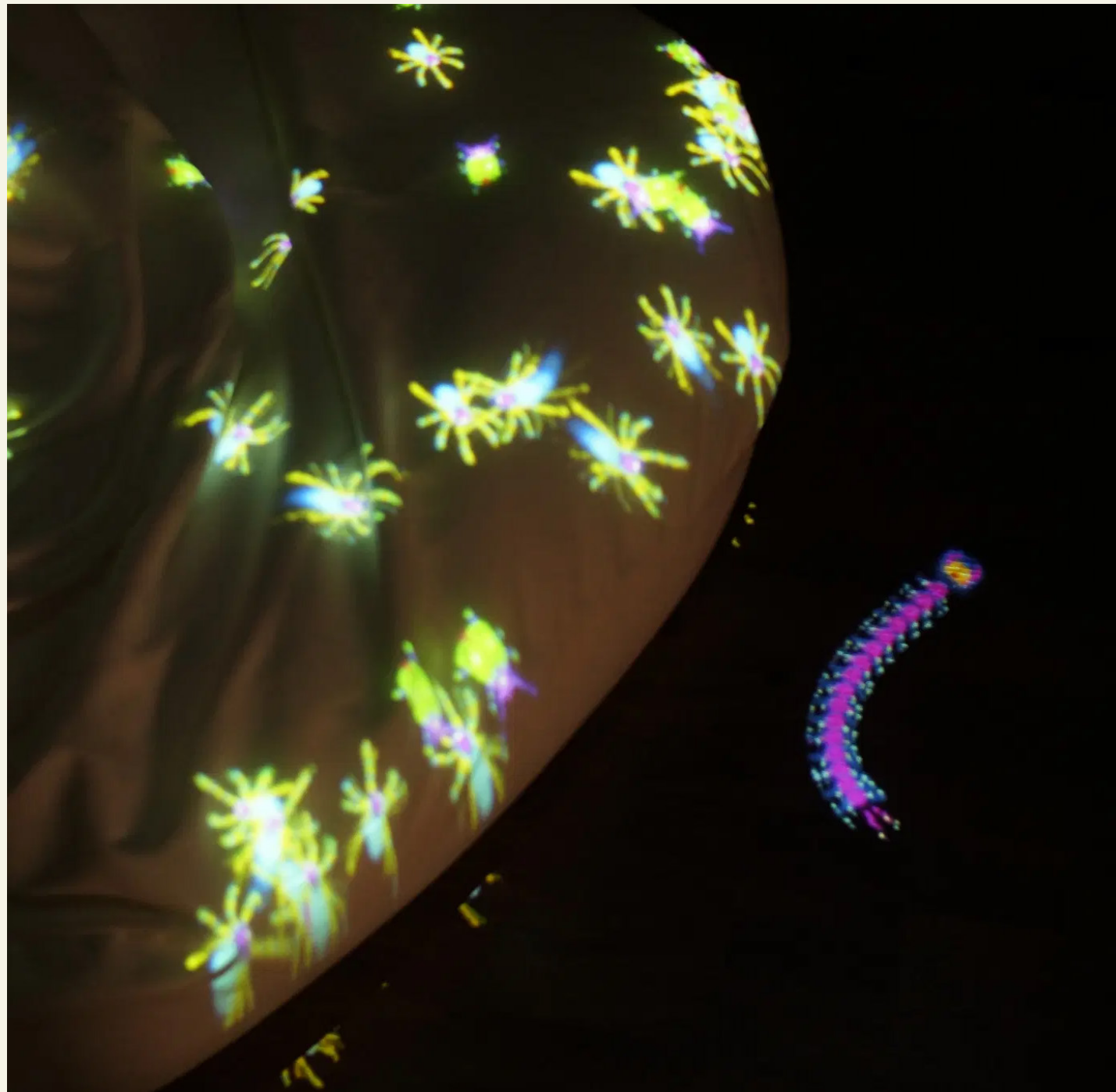
Moss Leaf



Zygomycota Fungi

TECHNICAL LINKS

Squid Soup



Infestation



Flow



Pathfinder Bug 2

MATERIALS



Bamboo and Jute
Natural Fibre Reinforcement

Mycotree by Dirk Hebbel and Philippe Block



Structures
Mycelium Composite Structures

The Living, an NYC architectural firm created a 40ft tower made from organic bricks

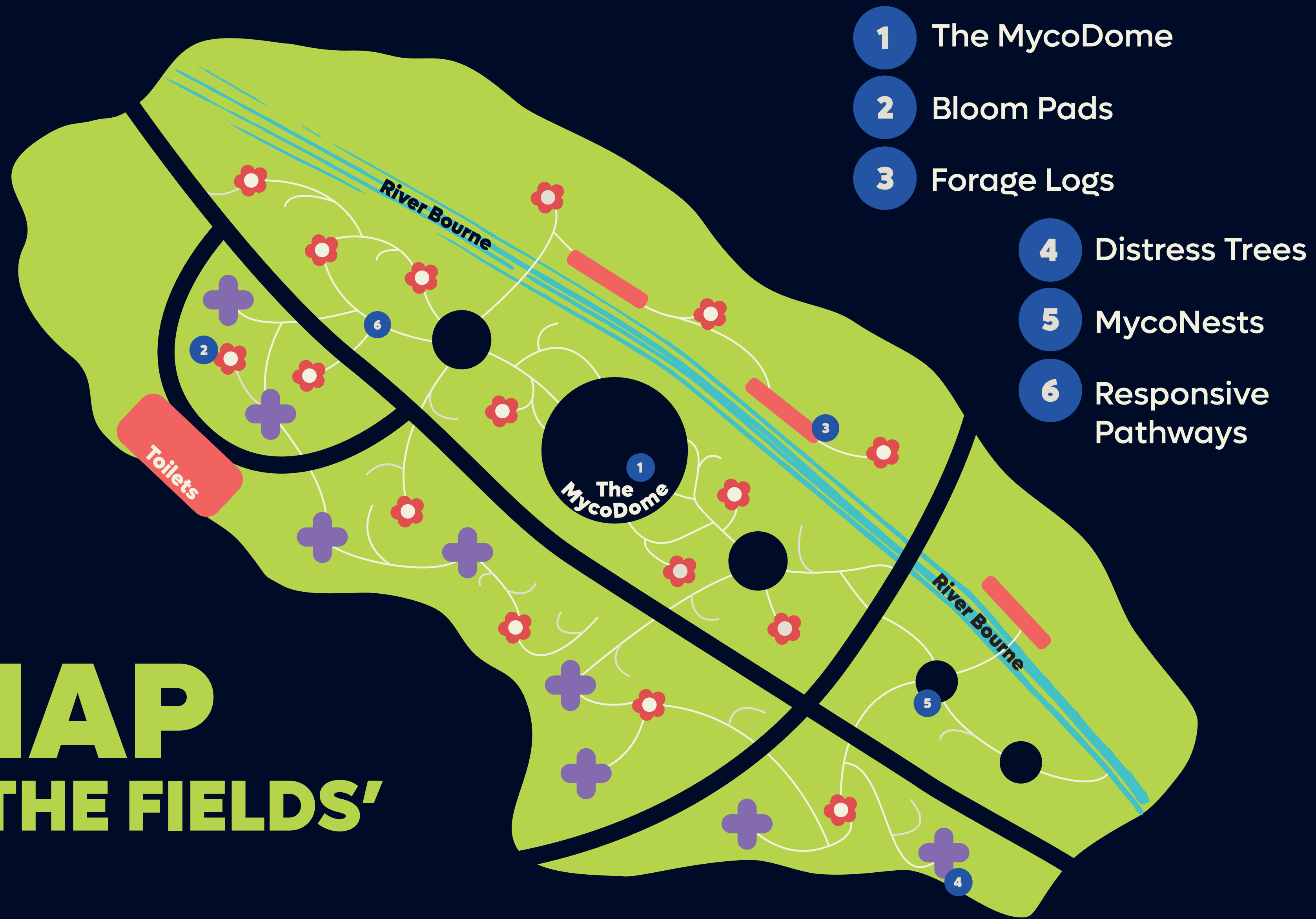


Shellac and Beeswax
Protective Coating

Italian company Mogu produces mycelium-based acoustic panels and flooring, finished with natural coatings like beeswax.

FUNCTION AND PURPOSE

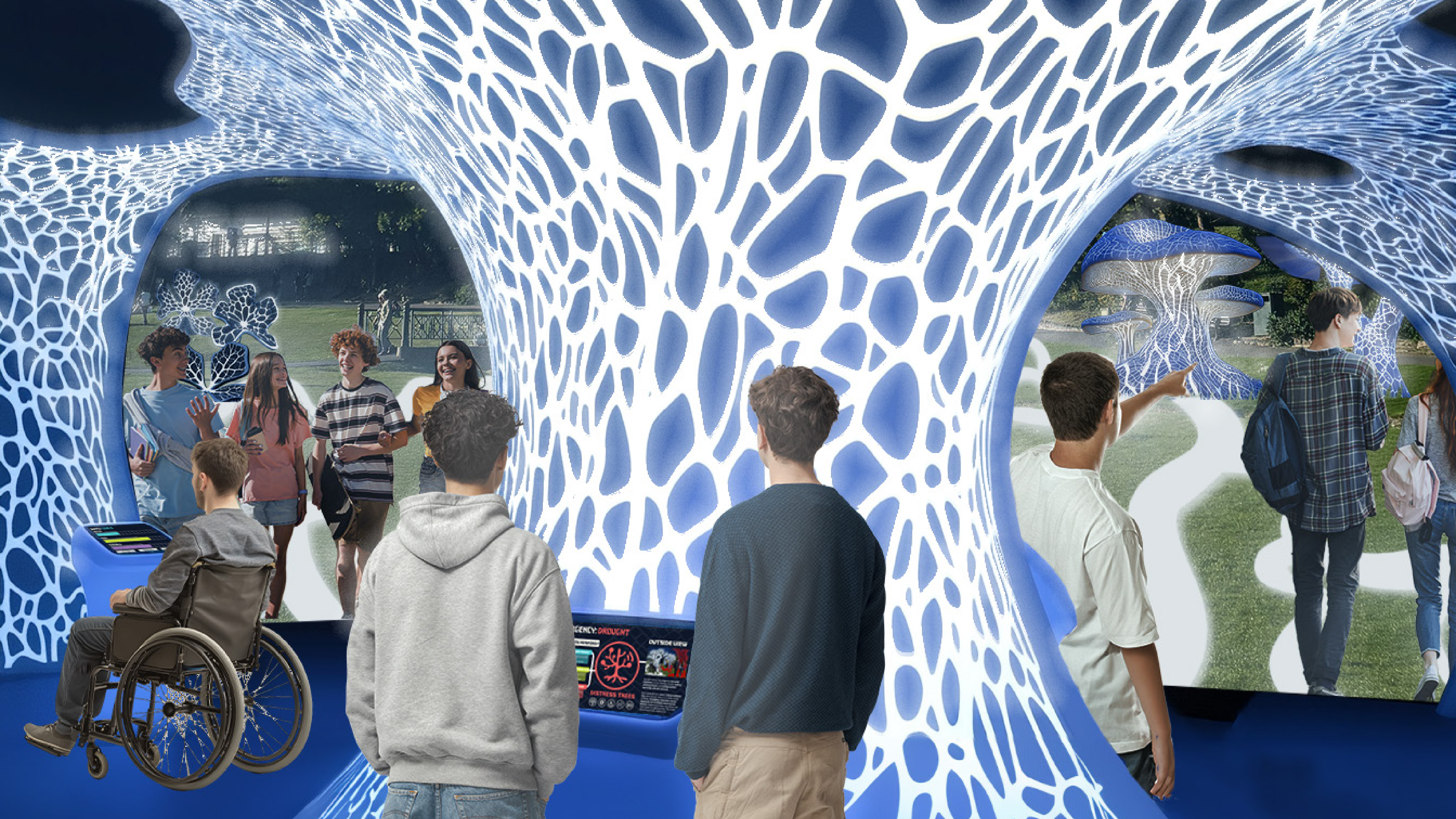
MAP 'THE FIELDS'











EMERGENCY: DROUGHT
OUTSIDE USE
DISTRESS TREE

USER INTERFACE


EMERGENCY: DROUGHT

HOW WILL YOU RESPOND?

- HYDRATION PATHWAY REBOOT**
"Initiates sub-root capillary dilation to absorb trace hydration from microfilament channels. May temporarily restore turgor pressure, but requires ongoing monitoring."
→ Moderate impact, low resource strain, but temporary.
- MYCO-CHANNEL REDISTRIBUTION**
Redirects stored hydration from fungal nodes in the network's outer ring. Triggers alert in connected organisms. May cause stress to donor zones."
→ Ethical dilemma: heal one area at the cost of another.
- EMERGENCY ROOT ISOLATION**
"Seals off failing xylem pathways to preserve hydration in adjacent systems. Cuts losses but severs ecological feedback in that region."
→ Morally grey. Saves wider system, sacrifices the node.



DISTRESS TREES



OUTSIDE VIEW




Drought stress has triggered **stomatal lockdown** across the tree cluster, **halting photosynthesis** and **cutting nutrient exchange** with the network.

Root-zone sensors detect **critical moisture loss**, and canopy tissue is in early-stage collapse. **Emergency hydration can be deployed, but available resources are limited.** Responding here may divert aid from other struggling zones. This node remains partially responsive.

SUPPLY LEVELS


WATER

Essential for hydration, conductivity, and fungal growth.




FOOD

Represents organic energy sources like sugars, powers mycelial activity and root growth.



MINERALS

Vital for plant development, resilience against disease, and structural stability.



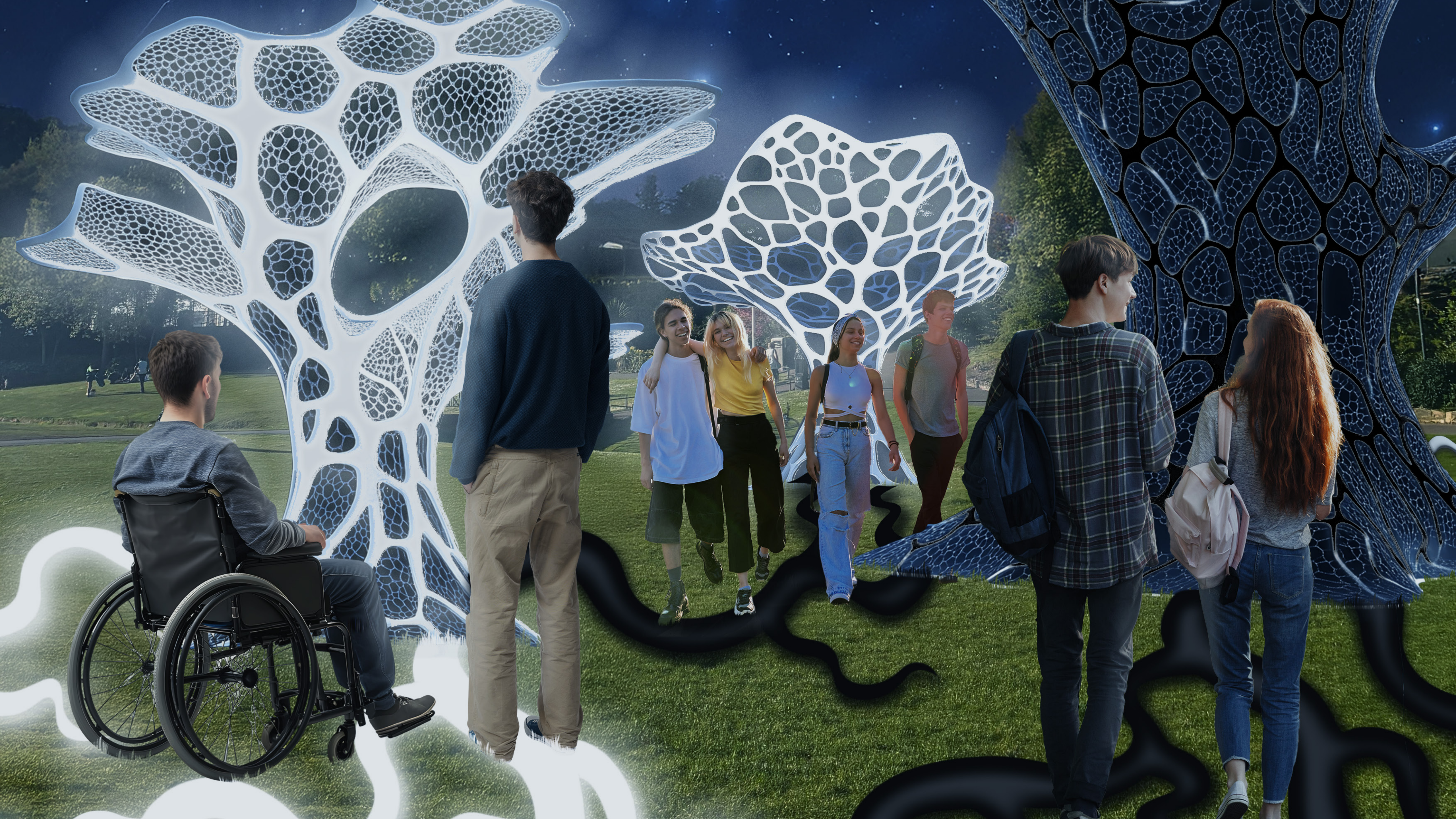
ANALYZE NODE **FORECAST IMPACT** **ADJUST ALLOCATION**

Responding to a danger signal

Health levels of the system











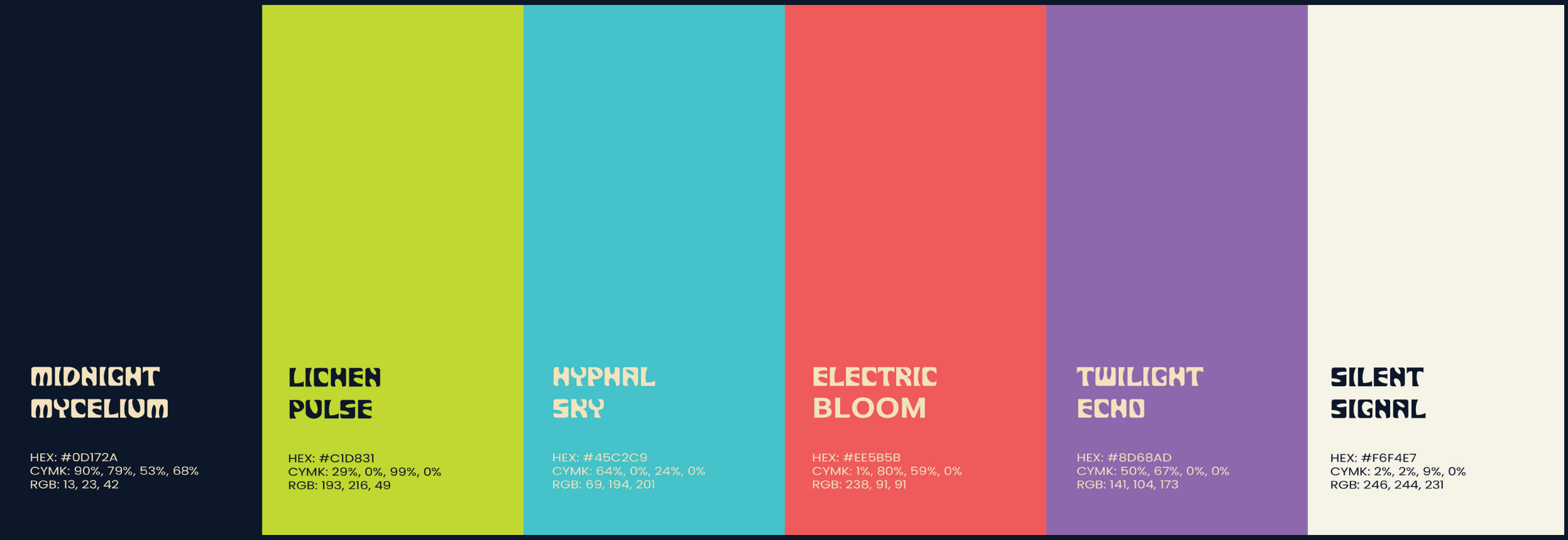
BRANDING

BRAND GUIDELINES



DERANIA

A B C D E F G H I J K L M N Ñ O P Q R S T U V W X Y Z
0 1 2 3 4 5 6 7 8 9



BRAND LANGUAGE

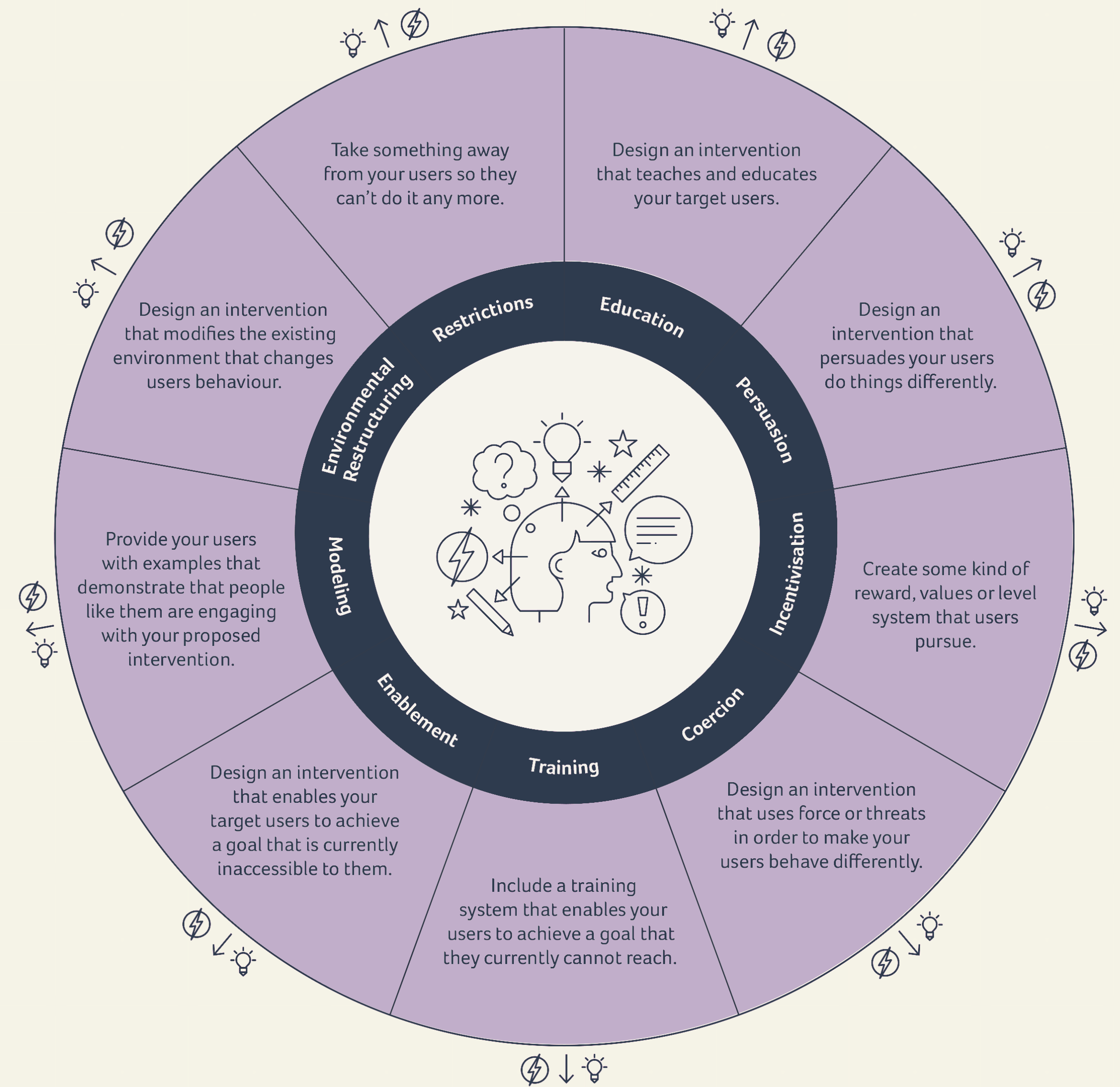


EDUCATION



CONNECTION TO NATURE

- **Restricts** linear or passive interaction by requiring users to actively monitor and respond
- **Educates** users about fungal and ecological communication
- **Persuades** teens to think ecologically by visualising the impact of imbalance, neglect, or over-support
- **Rewards** thoughtful and cooperative actions with visual system health
- **Coerces** focus and care by simulating degradation red signals, dying organisms, and fading structures
- **Trains** users in environmental ethics by placing them in control and forcing real-time, high-stakes decisions
- **Enables** teens to understand complex systems by translating ecological data into visual cues
- **Modelling:** systems-thinking through game play
- **Reconstructs the environment** as an interactive moral ecosystem, not static scenery, but something alive



THANK YOU!